

Set up Internet Connection of FLET'S Hikari Next

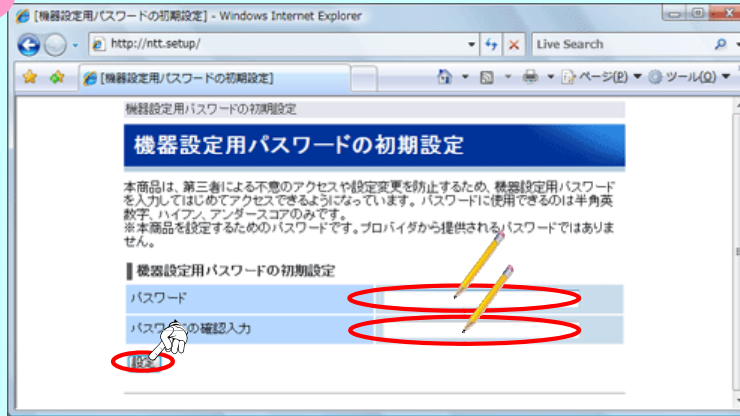
* In the case of using Hikari Phone * Windows Vista screen images

1



Start up the browser and input the following URL.
https://ntt.setup/

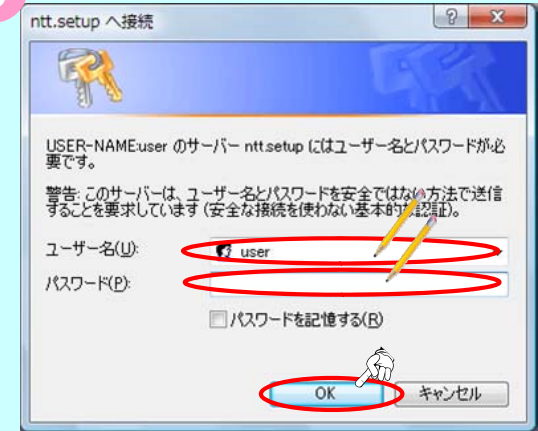
2



Make initial setup of password for equipment setup.

- [1] Input arbitrary character string (up to 64 alphanumeric characters) into "パスワード:Password".
- [2] Input the same character string as above [1] into "パスワードの確認入力>Password Confirmation".
- [3] When you completed the input, click "設定:Setup".

3



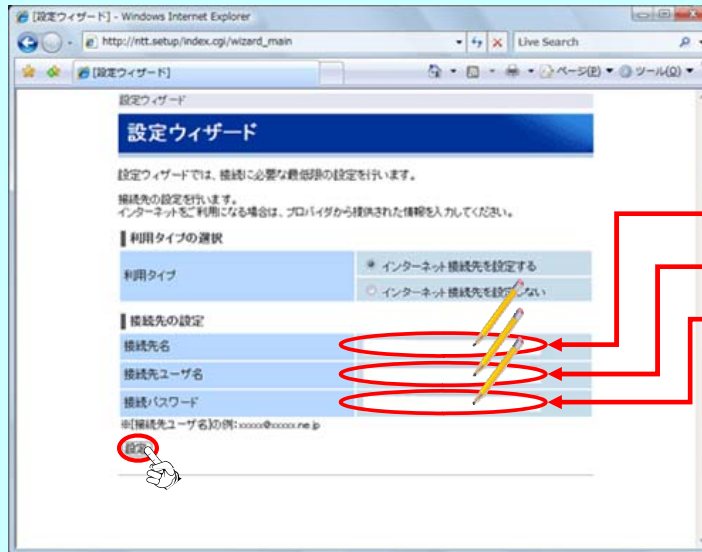
When the above screen appears, input the following and then click "OK":

- [1] Input "user" into "ユーザ名>User Name".
- [2] Input the password set in 2 into "パスワード>Password".

(If the screen doesn't appear, go to 4.)

4

- Input 「接続先名:Connection Name」.
※ Usually input your provider name, but you can input a name you want.
- Input 「接続ユーザ名:Connection User Name」 and 「接続パスワード:Connection Password」 shown in the document sent from your provider.
- When you completed the input, click "設定:Setup".



<Document sent from your provider (Example)>

■お客さま情報 (ご契約内容)	
[Customer information (Contract details)]	
プロバイダ名 [Provider name]	ABCプロバイダ
接続ユーザ名 [Connection user name]	abcd1234@* * *.abc.ne.jp
接続パスワード [Connection password]	efgh5678

Click "OK".

Attention Item names are different depending on the provider:

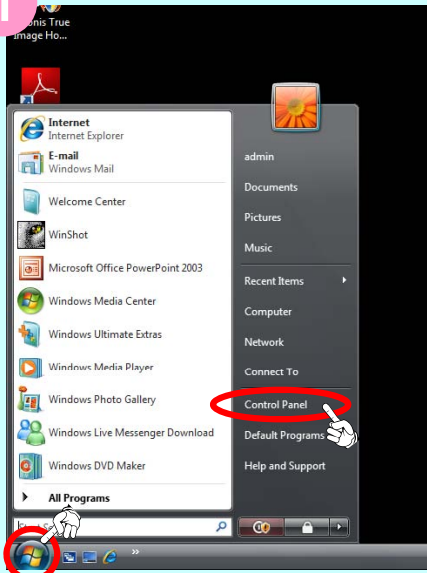
Possible examples of connection user name	Possible examples of connection password
■ 認証ID	■ 認証パスワード
■ ユーザID	■ パスワード
■ ログインID	■ 接続パスワード
■ (プロバイダ名) ID など	■ ログインパスワード
例: taro@xxx. xx. xx	■ ネットワークパスワード など

This completes the Internet Connection Setup.

Set up Internet Connection of FLET'S Hikari Next

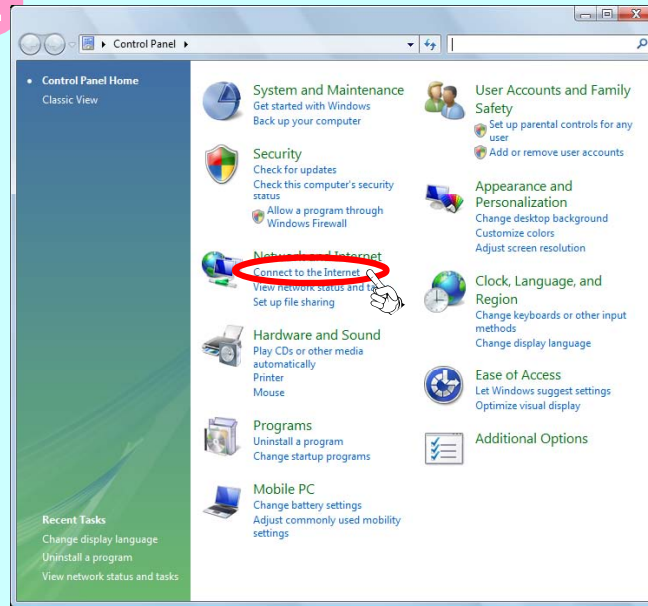
* When you do not use Hikari Phone * Windows Vista screen images

1



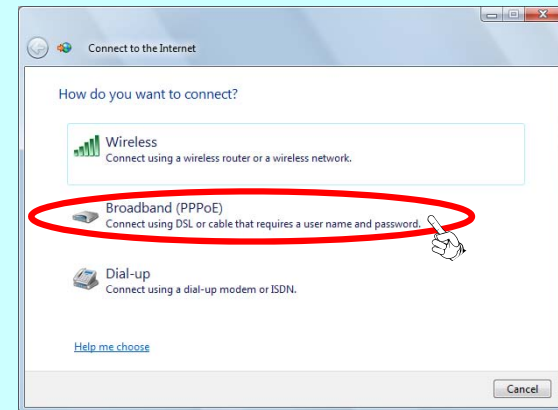
Click "Control Panel" on the Start Menu.

2



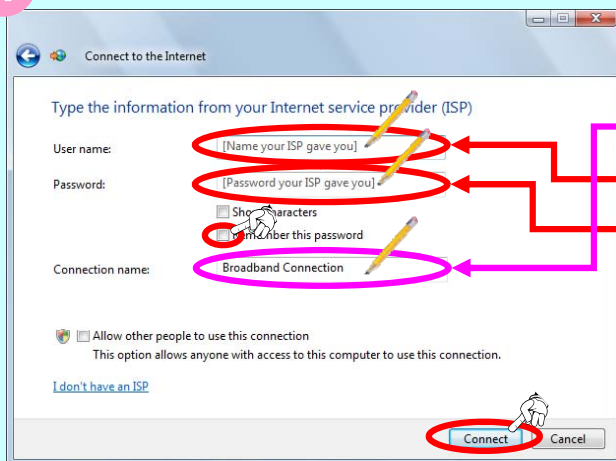
Click "Connection to the Internet".

3



Click "Broadband (PPPoE)".

4



<Document sent from your provider (Example)>

■お客様情報 (ご契約内容) [Customer information (Contract details)]	
プロバイダ名 [Provider name]	ABCプロバイダ
接続ユーザ名 [Connection user name]	abcd1234@***.abc.ne.jp
接続パスワード [Connection password]	efgh5678

Attention Item names are different depending on the provider:

Possible examples of connection user name

- 認証ID ■ ユーザID
- ログインID ■ 接続ID
- (プロバイダID) ID, etc.

Ex.: taro@xxx.xx.xx

Possible examples of connection password

- 認証パスワード
- パスワード
- 接続パスワード
- ログインパスワード
- ネットワークパスワード etc.

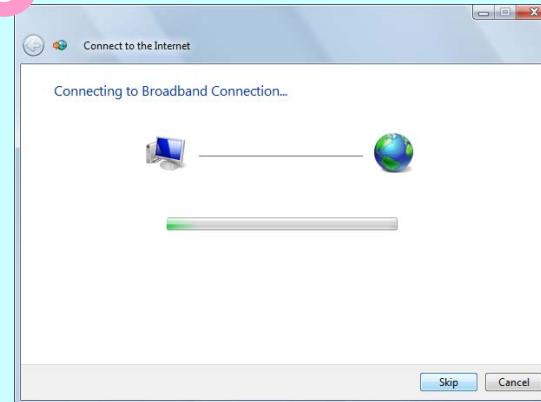
-Input [User Name] and [Password] shown in the document sent from your provider.

-Check the "Remember This Password" box .

-Input [Connection Name] and click "Connect".

* For [Connection Name], usually input your provider name, but you can input a name you want, too.

5

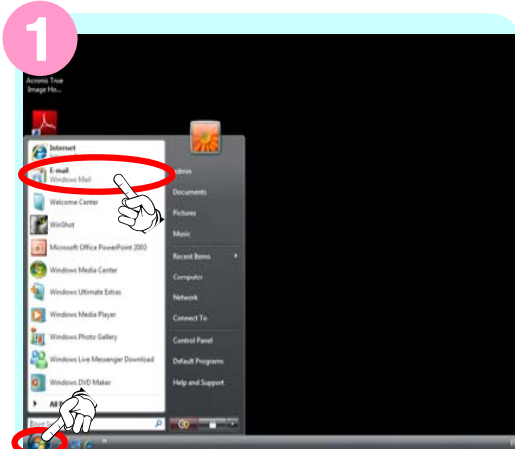


Wait for a while.

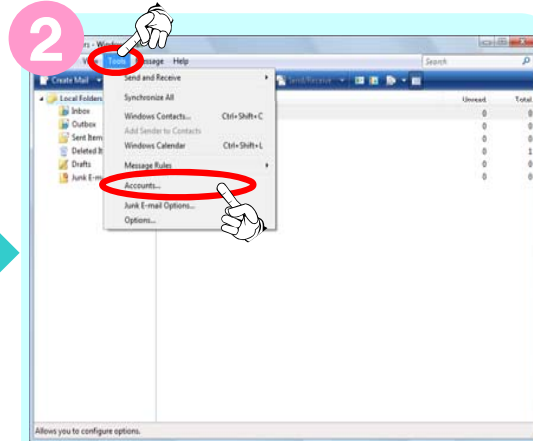
Click "Close".

This completes the Internet Connection Setup.

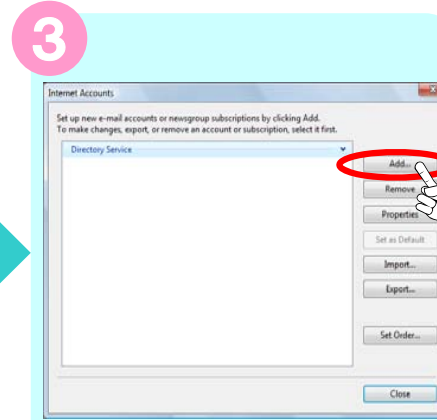
Set Up E-mail (1) × Windows Mail (Vista)



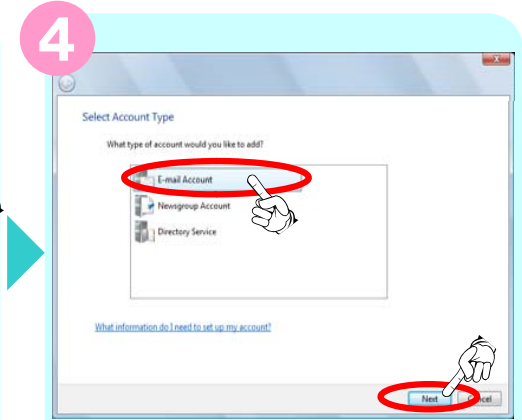
Click 「E-mail」 on the Start Menu.



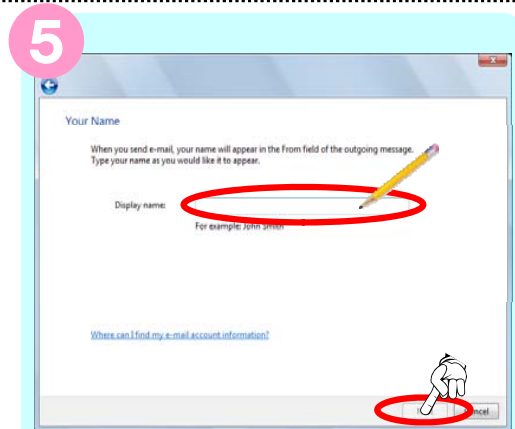
Click 「Accounts」 in 「Tools」 of the Menu Bar.



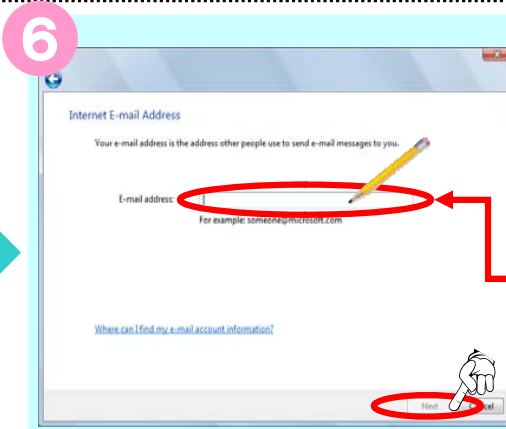
Click 「Add」.



Select 「E-mail Account」 and click 「Next」.



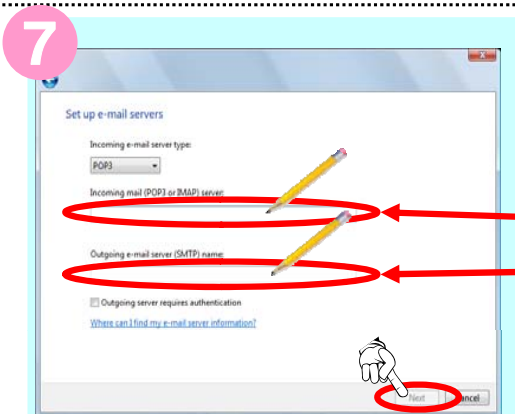
Input the sender name (arbitrary) into 「Display name」, and click 「Next」.



Input the Mail Address shown in the document sent from your provider in 「E-mail address」, and click 「Next」.

<Document sent from your provider (Example)>

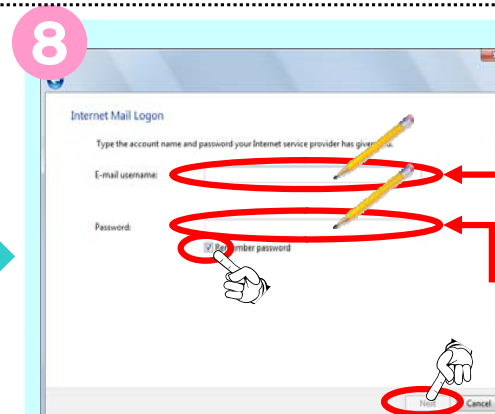
■お客さま情報（ご契約内容） [Customer information (Contract details)]	
メールアドレス [Mail address]	ijkl9012@***.abc.ne.jp



Input 「Incoming Mail Server」 and 「Outgoing Mail Server」 shown in the document sent from your provider, and click 「Next」.

<Document sent from your provider (Example)>

■お客さま情報（ご契約内容） [Customer information (Contract details)]	
受信メールサーバ [Incoming mail server]	qrst78.abc.ne.jp
送信メールサーバ [Outgoing mail server]	uvwx90.abc.ne.jp



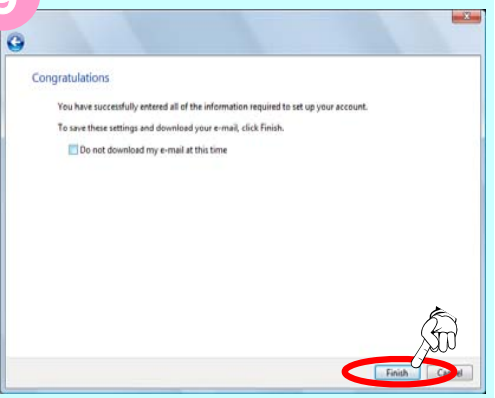
Input 「E-mail username」 and 「Password」 shown in the document sent from your provider, check the 「Remember Password」 box and click 「Next」.

<Document sent from your provider (Example)>

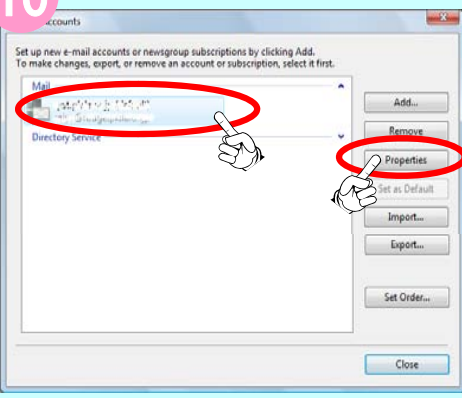
■お客さま情報（ご契約内容） [Customer information (Contract details)]	
メールアカウント [Mail account]	ijkl9012
メールパスワード [Mail password]	mnp3456

Set Up E-mail (2) * Windows Mail (Vista)

9 Click 「Finish」 .



10 Select the account you created and click 「Properties」 .

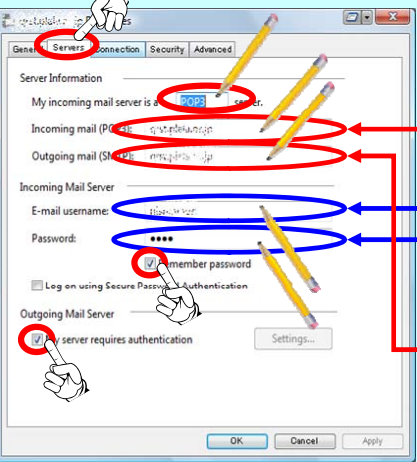


11

- Click the 「Servers」 tab.
- Input the information shown in the document sent from your provider:
 - [Server Information]
 - Select 「My incoming mail server is a ...」 .
 - Input 「Incoming mail」 .
 - Input 「Outgoing mail」 .
 - [Incoming Mail Server]
 - Input 「E-mail username」 .
 - Input 「Password」 .
- Check the 「Remember password」 box of [Incoming Mail Server].
- Check the 「My server requires authentication」 box of [Outgoing Mail Server].

<Document sent from your provider (Example)>

■お客様情報（ご契約内容） [Customer information (Contract details)]	
メールアカウント [Mail account]	ijk19012
メールパスワード [Mail password]	mnop3456
受信メールサーバ [Incoming mail server]	qrst78.abc.ne.jp
送信メールサーバ [Outgoing mail server]	uvwx90.abc.ne.jp



Attention 7 11 For input items of No. 7 and 11, item names are different depending on the provider.

Possible examples of outgoing mail server name	Possible examples of incoming mail server name
<ul style="list-style-type: none"> ■ SMTP メールサーバ ■ SMTP サーバ (名) ■ 送信サーバ (SMTP) ■ 送信用メールサーバ (SMTP), etc. 	<ul style="list-style-type: none"> ■ POP メールサーバ ■ POP サーバ (名) ■ 受信メールサーバ (POP3) ■ 受信用メールサーバ (POP3/ POP), etc.

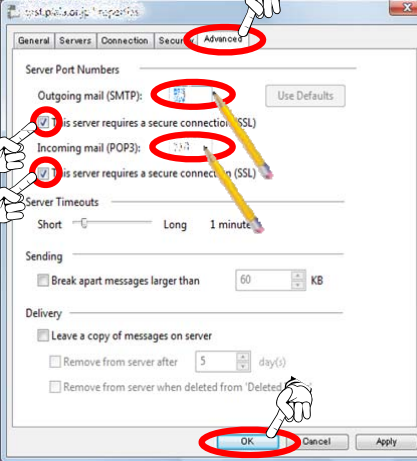
12 Click the 「Advanced」 tab.

Setting details are different depending on the provider. Please be sure to start setting after checking the document sent from your provider.

(As required by the provider)
[Server Port Number]

- Input 「Outgoing Mail」 .
- Check the box of 「This server requires a secure connection (SSL)」 .
- Input 「Incoming Mail」 .
- Check the box of 「This server requires a secure connection (SSL)」 .

Click 「OK」.



This completes the E-mail setup.

! For inquiries about the E-mail setup, please contact your mail address provider.